

Bethlehem Central School District



Long Range Planning Report 2010

<http://bethlehemschools.org>

Table of Contents

Superintendent Introduction	1
Student Enrollment Report 2010-11	3
Current/Projection Enrollment Comparison	4
K-12 Enrollment Sections and Staffing 2010-11	5
Accuracy of Projection 3,6,8 Year Methods	7
2010-11 Enrollment vs. Projections Analysis	8
Ten Year Enrollment History	9
Actual Enrollment and Future Projections	10
Five Year History Enrollment with Trend Projection	11
Ten Year History of Kindergarten Enrollment	12
Projected Student Enrollment 2011-12: Current Registration Information	13
Bethlehem Enrollment Area	14
Albany County Live Birth Data	15
Projected Enrollment 3-Year Method	16
Projected Enrollment 6-Year Method	17
Projected Enrollment 8-Year Method	18
2011-12 Enrollment Registration with 3, 6, 8 Year Projections	19
2011-12 Adjusted Enrollment Regression Analysis with Projections	20
2011-12 Enrollment Registration with 3, 6, 8 Year Projections	21
Registration with Adjusted Projections	22
Comparison of Student: Teacher Ratio	23
K-12 Private/Parochial School 2010-11	24
Kindergarten Private/Parochial 2010-11	25
Comparison of Public and Private Enrollment	26
Incoming Kindergarten Students Census Data	27
Town of Bethlehem Single-Family Houses Built	28
Buildable Single Family Lots	29
Summary of 2004-05 through 2009-10 Enrollment and Class Size Comparison	31
Elementary Enrollment and Staffing 1998-2012	32
Middle School Staffing Comparison Data	33
HS Sections Staffing 2010-11	34
HS Student Courses/Teachers Staffing Data 2000-2011	35
Elementary School Capacity 2010-11 School Year	36
Elementary Capacity vs. Growth	37

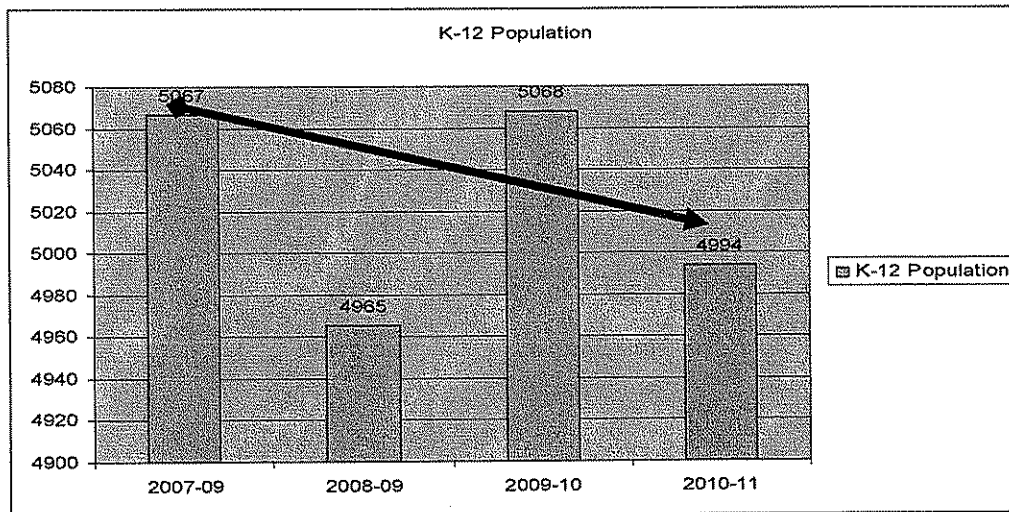
Long Range Report 2010

Introduction

The long range report of the Bethlehem Central School District serves the state mandate that “each school district shall develop and keep on file a comprehensive long range plan pertaining to educational facilities” and report of community demographics relating to the enrollment and staffing for future school years.¹ The demographic/enrollment projection study provides historical and current Bethlehem Central School District enrollment data and suggests scenarios based on the trending of patterns from historical data. A cohort survival statistic methodology is used, along with data resources from the Town of Bethlehem, Albany County Health Department, New York State Health Department and the US Census.

While each page of the report consists of a spreadsheet analyzing a specific area of the study, it is important to remember that when looking at trends, projections may not be as clear as we would like. To paraphrase Shakespeare, the interpretation of data is in the eyes of the beholder. Hopefully, you will agree with the conclusions that we will make in using this data to inform our budget decisions in the next few months.

The first part of the report displays the demographic information for the current enrollment of the 2010-11 school year. As of October 1, 2010, we were a school district of 4,994 students (K-12). Since the 2007-08 school year the population has dropped slightly, as can be seen in the following.



¹ Compilation of Codes, Rules and Regulations of the State of New York, Title 8, Education Department, Chapter 2, Regulations of the Commissioner, Subchapter J, Building and Transportation, Part 155, Educational Facilities, §a.

Projections used one year ago to plan for the K-12 instructional program were quite close to accurate with a total disparity of 33 students, not accounting for self-contained Special Education children. The analysis of the thirteen year K-12 enrollment from 2006-07 to 2018-19 displays a projected loss of over 300 students in the total population. This is based on the data received from the NYS Health department on live birth data for the Bethlehem Central School District catchment area.

Kindergarten enrollment over the past three years has remained above 85% of the eligible kindergarten population. As referenced last year, the fact kindergarten has returned to the home schools and has become a full day program has been a great draw for families.

Currently, we have registered for the 2011-12 school year 4,782 students K-12. We anticipate this number increasing as more families register students for next school year. Given what we know currently, we anticipate potential program reductions and staffing cuts. Our K-5 population currently has 95 classroom teachers over six elementary schools. We could possibly reduce that to a range of 89 – 92 sections as we gather more information. Potentially, we could reduce elementary staffing by six positions if necessary. Middle school staffing could stay the same as we anticipate an increase of 25 students for next year. High school staffing was cut back last year by 4 FTE positions. Currently, with 91.9 FTE and over 10,486 enrollment requests the student to teacher ratio is 114:1, which is much higher than previous years. We recommend holding on further reductions at the secondary level for the present.

The elementary school classrooms have balanced out quite well since redistricting. Special subject areas now are off the cart and computer work rooms are available for the students in various schools. We are not expecting any residential growth for new home construction once again, so needs for the extra classrooms are low, at this time. Depending on the decision making of the Board for future planning these spaces will become valuable for potential cost savings.

Student Enrollment Report 2010-11, October 1, 2010

K-12 by Building

Elementary Schools											
	<u>K</u>	<u>1</u>	<u>2</u>	<u>3</u>	<u>4</u>	<u>5</u>	SPED	Total Students	Total Teachers	S:T Ratio	
Clarksville	43	25	24	37	43	31		203	11	18.45	
Eagle	43	57	62	78	79	78	4	401	18	22.28	
Elsmere	42	50	46	43	40	61		282	13	21.69	
Glenmont	55	55	59	58	53	77	15	372	17	21.88	
Hamagrael	48	61	61	73	68	74	13	398	17	23.41	
Slingerlands	61	70	69	73	98	71	9	451	19	23.74	
K-5 Totals	292	318	321	362	381	392	41	2107	95	22.18	
Middle School											
	<u>6</u>	<u>7</u>	<u>8</u>								
	389	411	393					1193	60	19.88	
High School											
	<u>9</u>	<u>10</u>	<u>11</u>	<u>12</u>							
	420	473	386	415				1694	94.9	17.85	
							Total	4994	249.9	19.98	

Long Range Data Report 2010
Current/Projected Enrollment Comparison
October 1, 2010

K-12 by Building

Elementary Schools																	
	Actual	Proj.	Actual	Proj.	Actual	Proj.	Actual	Proj.	Actual	Proj.	Actual	Proj.	Actual	Projected	Teachers	S:T Ratio	
	<u>K</u>	<u>K</u>	<u>1</u>	<u>1</u>	<u>2</u>	<u>2</u>	<u>3</u>	<u>3</u>	<u>4</u>	<u>4</u>	<u>5</u>	<u>5</u>	Total	Total			
Clarksville	43	41	25	30	24	27	37	42	43	48	31	35	203	223	11	18.45	
Eagle	43	45	57	56	62	60	78	72	79	75	78	81	397	389	18	22.06	
Elsmere	42	30	50	44	46	46	43	45	40	39	61	58	282	262	13	21.69	
Glenmont	55	43	55	54	59	57	58	57	53	59	77	73	357	343	17	21.00	
Hamagrael	48	43	61	57	61	56	73	69	68	66	74	77	385	368	17	22.65	
Slingerlands	61	52	70	68	69	66	73	72	98	96	71	68	442	422	19	23.26	
K-5 Totals	292	254	318	309	321	312	362	357	381	383	392	392	2066	2007	95	21.75	
		1.15		1.03		1.03		1.01		0.99		1					
Middle School	<u>6</u>		<u>7</u>		<u>8</u>												
	389	375	411	409	393	396							1193	1180	60	19.88	
		1.04		1		0.99											
High School	<u>9</u>		<u>10</u>		<u>11</u>		<u>12</u>										
	420	413	473	474	386	400	415	411					1694	1698	94.9	17.85	
		1.02		1		0.97		1.01									
													Total	4953	4885	249.9	19.82

K-12 Enrollment
Sections and Staffing
2010-11
October 1, 2010

10/1/10 Enrollment

	<u>K</u>	<u>1</u>	<u>2</u>	<u>3</u>	<u>4</u>	<u>5</u>	Total	Teachers	Ratio
Clarksville (11 FTE)	21	16	17	18	22	16			
	22	8 ←	→ 7	19	21	15			
Total	43	25	24	37	43	31	203	11	18.45
Eagle (18 FTE)	21	19	20	26	19	26			
	22	19	21	26	20	26			
		19	21	26	20	26			
					20				
K-2 Primary Intensive	1	3							
3-5 Social Development			1	3		1			
Total	43	57	62	78	79	78	397	18	22.06
Elsmere (13 FTE)	21	25	23	21	20	21			
	21	25	23	22	20	20			
						20			
Total	42	50	46	43	40	61	282	13	21.69
Glenmont (17 FTE)	18	18	19	20	26	25			
	18	18	20	19	27	26			
	19	19	20	19		26			
2nd Primary Skills			6	3					
3-5 Inter. Skills					5	1			
Total	55	55	59	58	53	77	357	17	21.00
Hamagrael (17 FTE)	24	21	21	24	22	25			
	24	20	20	24	23	25			
		20	20	25	23	24			
Primary Skills 1st grade		7							
3-5 Inter. Skills				2	2	2			
Total	48	61	61	73	68	74	385	17	22.65

K-12 Enrollment
Sections and Staffing
2010-11

Slingerlands (19 FTE)	20	23	23	24	24	23			
	20	23	23	24	24	24			
	21	24	23	25	25	24			
					25				
K Primary Skills	9								
Total	61	70	69	73	98	71	442	19	23.26
Regular Education total	292	318	321	362	381	392	2066	95	21.75
Including 41 Sp. Ed.	302	328	327	367	388	395	2107		

Special education - 5 are included in the numbers

Special education - 41 are not included in the numbers

<u>6</u>	<u>7</u>	<u>8</u>	<u>9</u>	<u>10</u>	<u>11</u>	<u>12</u>	
389	411	393	420	473	386	415	4994

Accuracy of Projection I.3

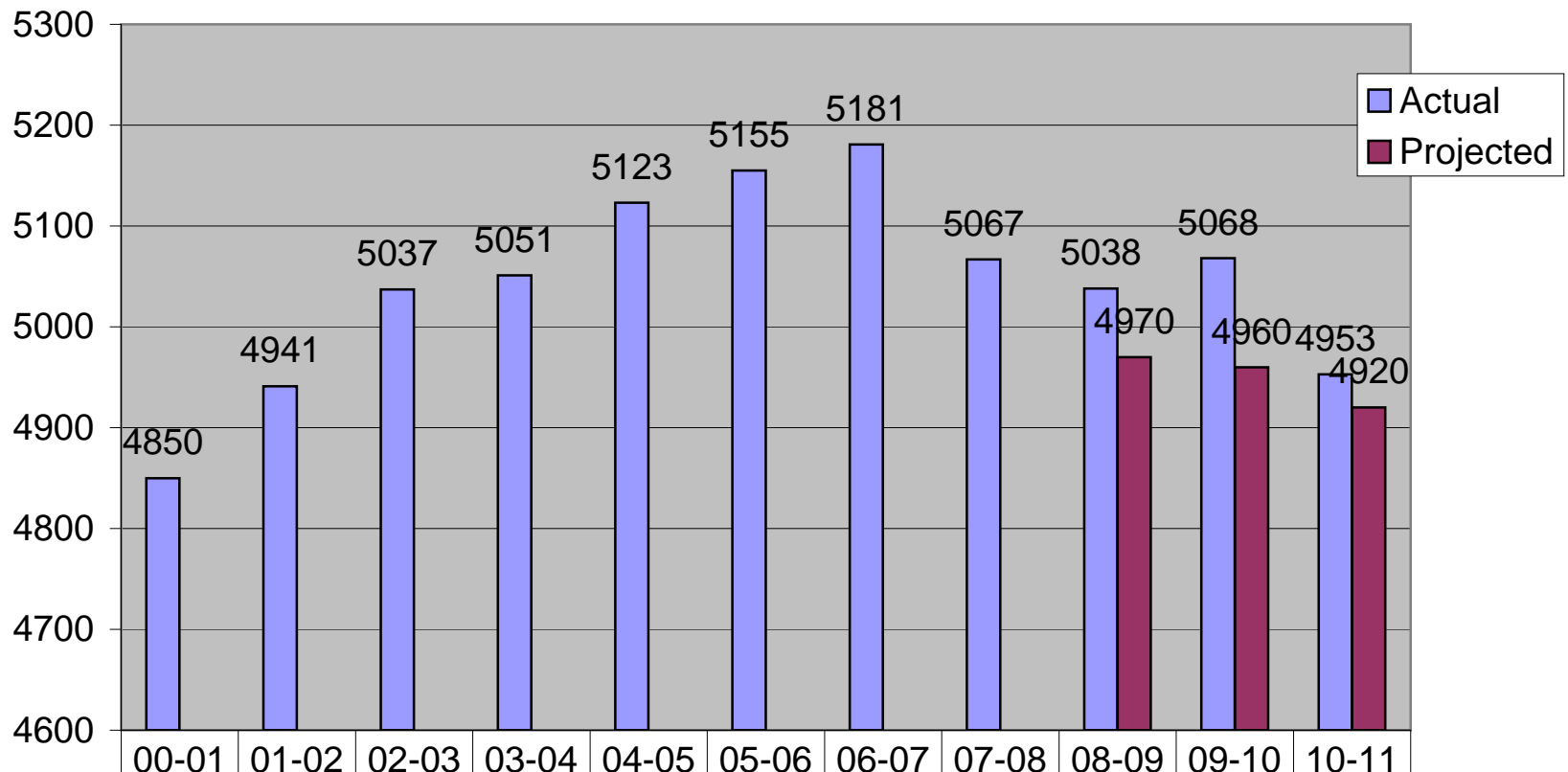
3,6,8 Year Methods

	2007-08 Actual	2008-09 Actual	2009-10 Actual	Survival Ratio	2010-11 Actual	Survival Ratio	3-Year Projection	3-Year Ratio	6-Year Projection	6-Year Ratio	8 Year Projection	8 Year Ratio
Birth	298	276	255		269							
k	272	275	308	1.208	292	1.086	270	1.059	273	1.071	275	1.078
1	367	340	311	1.131	318	1.089	382	1.240	377	1.224	375	1.218
2	374	353	355	1.044	321	1.032	329	1.058	326	1.048	328	1.055
3	374	380	383	1.085	362	1.020	370	1.042	369	1.039	370	1.042
4	380	373	393	1.034	381	0.995	401	1.047	402	1.050	404	1.055
5	387	389	375	1.005	392	0.997	402	1.023	404	1.028	405	1.031
Total K-5	2154	2110	2125		2066		2154		2151		2157	
Variance							88		85		91	
% Variance							4.3%		4.1%		4.4%	
6	401	387	408	1.049	389	1.037	390	1.040	389	1.037	391	1.043
7	456	389	394	1.018	411	1.007	411	1.007	418	1.025	419	1.027
8	389	407	412	1.059	393	0.997	394	1.000	395	1.003	396	1.005
Total 6-8	1246	1183	1214		1193		1195		1202		1206	
Variance							2		9		13	
% Variance							0.2%		0.8%		1.1%	
9	397	393	474	1.165	420	1.019	420	1.019	424	1.029	426	1.034
10	444	411	397	1.010	473	0.998	481	1.015	476	1.004	473	0.998
11	420	443	410	0.998	386	0.972	389	0.980	389	0.980	389	0.980
12	406	425	448	1.011	415	1.012	413	1.007	412	1.005	412	1.005
Total 9-12	1667	1672	1729		1694		1703		1701		1700	
Variance							9		7		6	
% Variance							0.5%		0.4%		0.4%	
K-12	5067	4965	5068		4953		5052		5054		5063	
Variance							99		101		110	
% Variance							2.00%		2.04%		2.22%	

2010-11 Enrollment vs. Projections Analysis

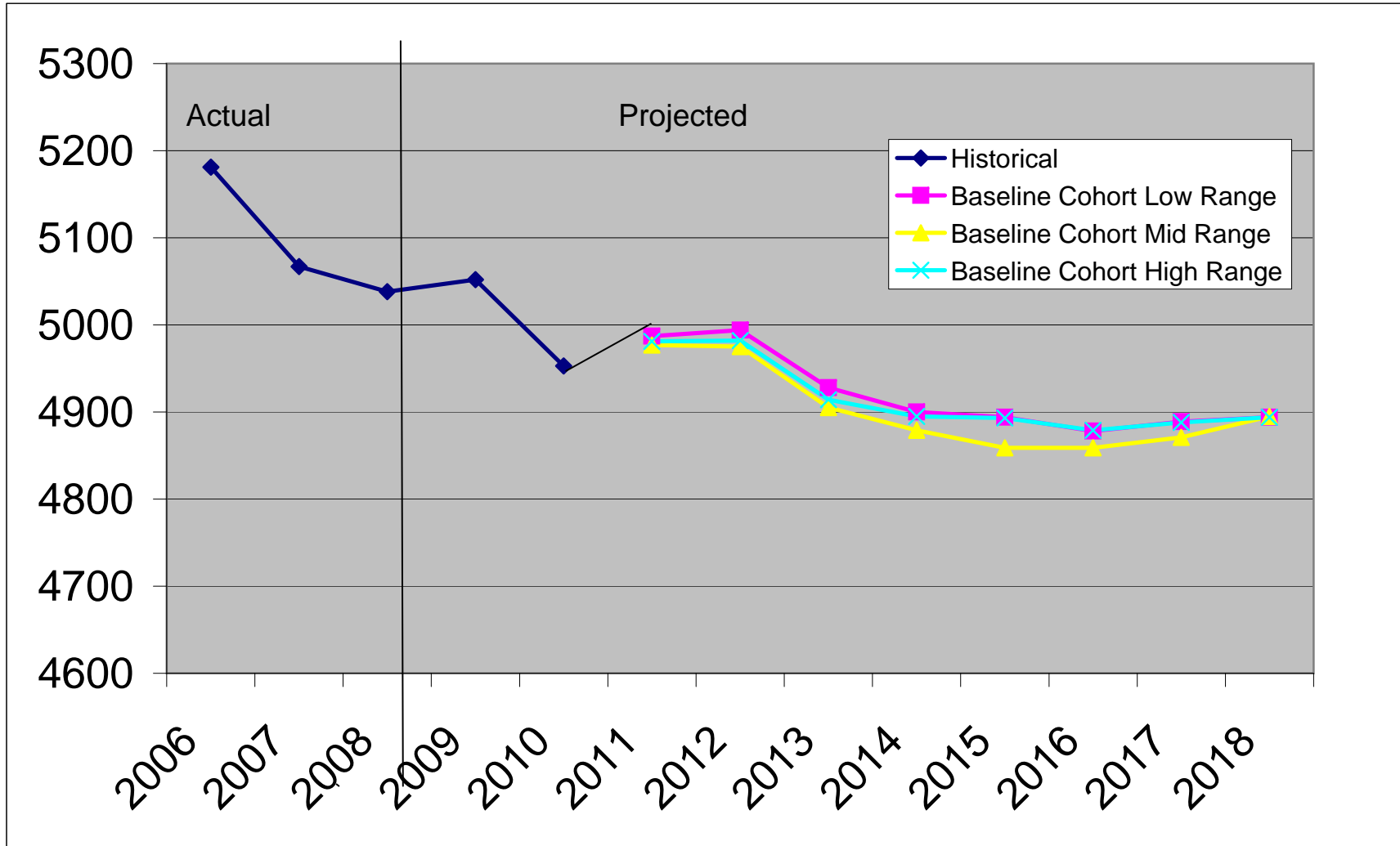
		<u>10/1/2010</u>	<u>2010-11 Projections</u>	<u>10/1/2010 Actual vs. Projections</u>
Kindergarten		292	265	27
1st		318	318	0
2nd		321	313	8
3rd		362	354	8
4th		381	384	-3
5th		392	392	0
Total	K-5	2066	2026	40
MS	6	389	379	10
MS	7	411	409	2
MS	8	393	397	-4
Total MS	6-8	1193	1185	8
HS	9	420	421	-1
HS	10	473	479	-6
HS	11	386	394	-8
HS	12	415	415	0
Total HS	9-12	1694	1709	-15
Total K-12	K-12	4953	4920	33

Ten Year Enrollment History



Actual	4850	4941	5037	5051	5123	5155	5181	5067	5038	5068	4953
Projected									4970	4960	4920

Line Graph of Actual and Projected Enrollment



Five Year History Enrollment
With Trend Projection

		<u>Oct. 6, 2006</u>	<u>Oct. 5, 2007</u>	<u>Oct. 3, 2008</u>	<u>Oct. 2, 2009</u>	<u>Oct. 1, 2010</u>	<i>2011-12 Pro</i>
K		288	272	276	292	292	284
Clarksville	1-5	265	272	205	188	160	218
Eagle	1-5	na	na	382	368	354	368
Elsmere	1-5	328	313	248	231	240	272
Glenmont	1-5	434	408	309	328	302	356.2
Hamagrael	1-5	488	496	324	326	337	394.2
Slingerlands	1-5	380	393	384	376	381	382.8
Total	1-5	1895	1882	1852	1817	1774	1844
Total	K-5	2183	2154	2128	2109	2066	2128
MS	6	458	401	393	408	389	409.8
MS	7	396	456	403	394	411	412
MS	8	396	389	456	412	393	409.2
Total MS	student-t	1250	1246	1252	1214	1193	1231
HS	9	453	397	391	474	420	427
HS	10	444	444	410	397	473	433.6
HS	11	412	420	443	410	386	414.2
HS	12	439	406	414	448	415	424.4
Total HS	9-12	1748	1667	1658	1729	1694	1699.2
Total K-12	K-12	5181	5067	5038	5052	4953	5058.2
Self Contained SPED		31	39	55	44	41	42

Ten Year Historical Kindergarten Enrollment

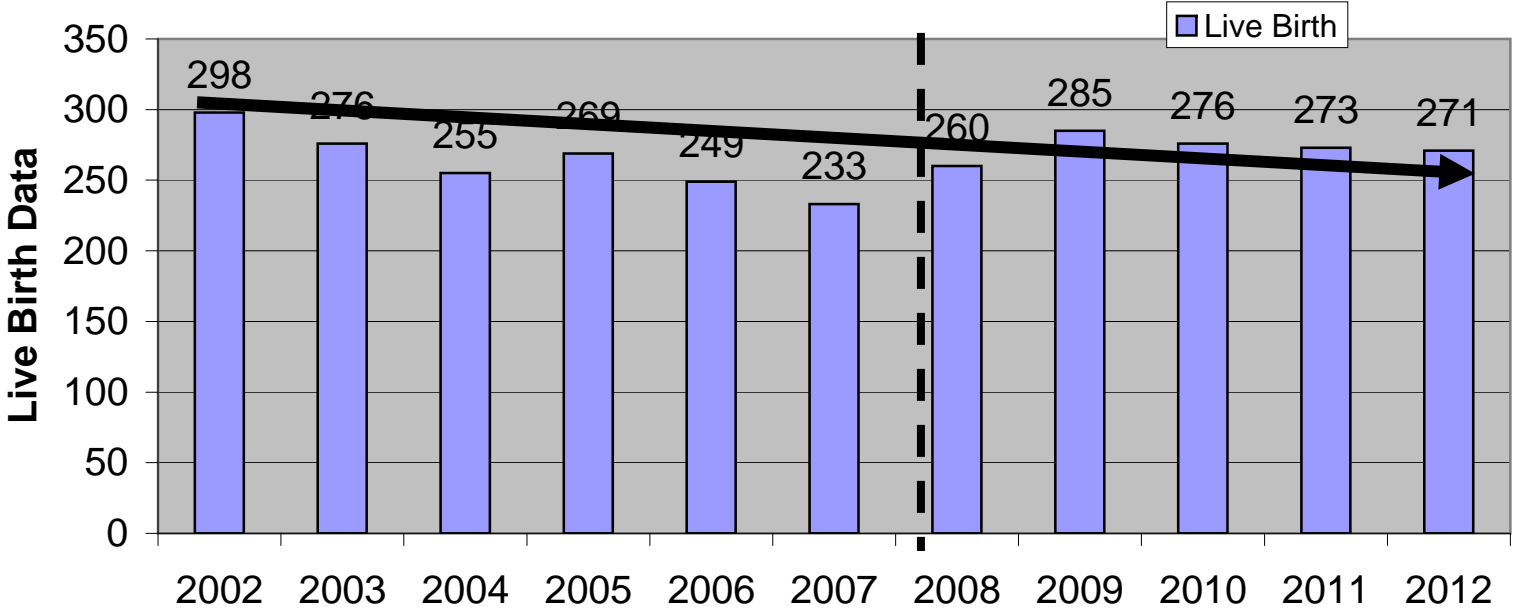
Year	BC K	Private K	Total K	BC% K Total
2010-11	292	27	319	84.6%
2009-10	292	28	320	84.6%
2008-09	276	59	335	82.4%
2007-08	272	78	350	77.7%
2006-07	288	76	364	79.1%
2005-06	294	93	387	76.0%
2004-05	297	81	378	78.6%
2003-04	306	80	386	79.3%
2002-03	304	79	383	79.4%
2001-02	312	65	377	82.8%

Projected Student Enrollment 2011-12
Current Registration Information

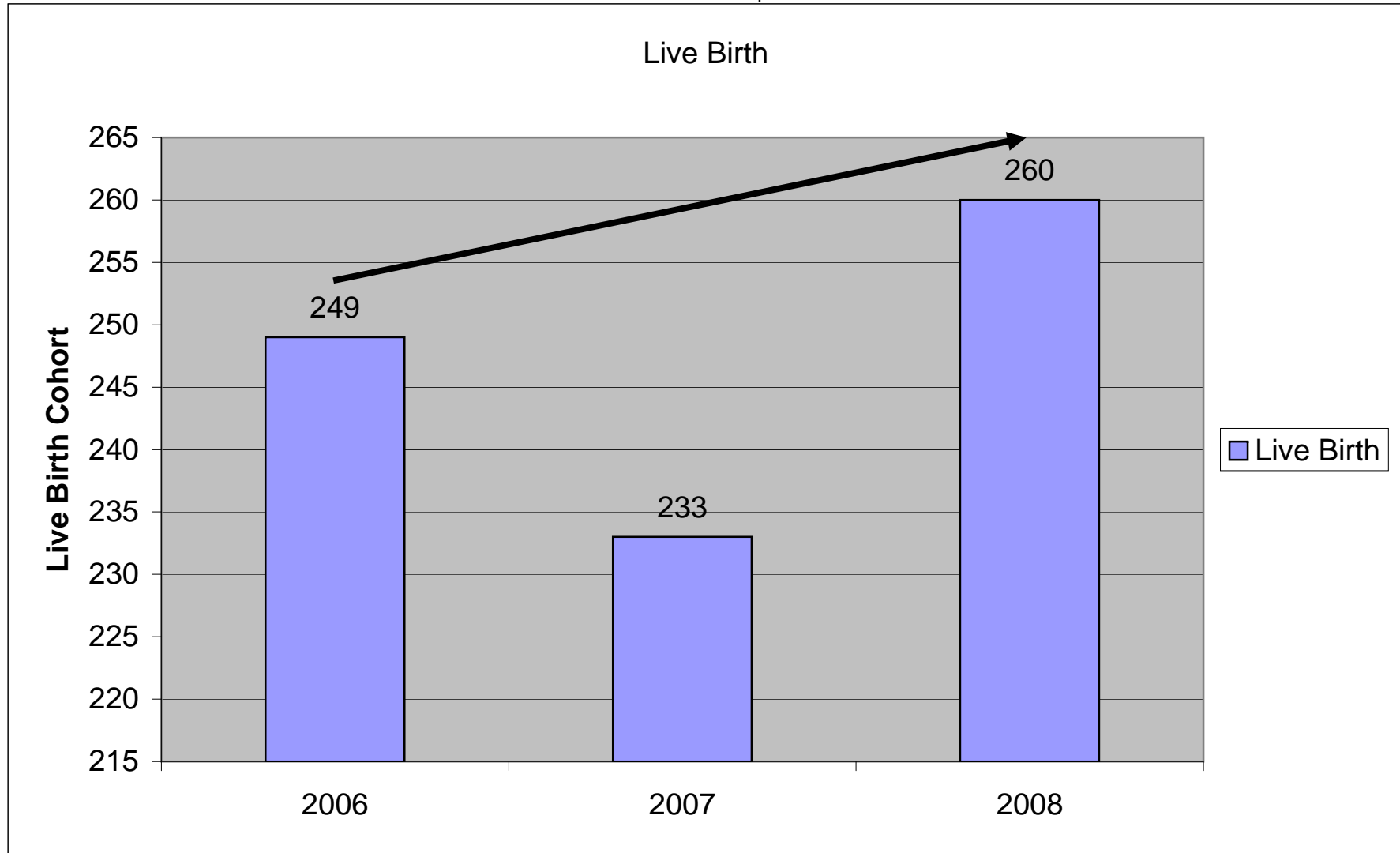
Registration with Current Enrollment for 2011-12
K-12 by Building

Elementary Schools									2011-12 Proj. Current	Difference
		<u>K</u>	<u>1</u>	<u>2</u>	<u>3</u>	<u>4</u>	<u>5</u>	Projected		
Clarksville		31	43	25	24	37	43	218	203	15
Eagle		51	43	57	62	78	79	368	370	-2
Elsmere		32	42	50	46	43	40	272	253	19
Glenmont		45	55	55	59	58	53	356.2	325	31.2
Hamagrael		36	48	61	61	73	68	394	347	47
Slingerlands		49	61	70	69	73	98	382.8	420	-37.2
K-5 Totals		244	292	318	321	362	381		1918	73
		284								
Middle School		<u>6</u>	<u>7</u>	<u>8</u>						
		392	389	411					1192	
High School		<u>9</u>	<u>10</u>	<u>11</u>	<u>12</u>					
		393	420	473	386				1672	
								Total	4782	

Bethlehem Enrollment Area



Albany County Live Birth Data
Bethlehem CSD Enrollment Area
Short Sample



**Bethlehem Central School District
Projected Enrollments 3-Year Method**

	<i>11-12</i>	<i>12-13</i>	<i>13-14</i>	<i>14-15</i>	<i>15-16</i>	<i>16-17</i>	<i>17-18</i>	<i>18-19</i>	<i>19-20</i>	<i>20-21</i>
<i>K</i>	299	286	297	292	294	303	311	319	328	336
<i>1</i>	350	348	333	346	340	342	353	362	371	382
<i>2</i>	340	361	359	344	357	351	353	364	373	383
<i>3</i>	337	350	372	370	354	368	361	364	375	384
<i>4</i>	370	341	354	376	374	358	372	365	368	379
<i>5</i>	393	375	345	358	381	379	362	377	370	373
<i>1-5</i>	1790	1775	1763	1794	1806	1798	1801	1832	1857	1901
<i>K-5</i>	2089	2061	2060	2086	2100	2101	2112	2151	2185	2237
<i>6</i>	407	406	387	356	369	393	391	374	389	382
<i>7</i>	391	409	408	389	358	371	395	393	376	391
<i>8</i>	412	392	410	409	390	359	372	396	394	377
<i>6-8</i>	1210	1207	1205	1154	1117	1123	1158	1163	1159	1150
<i>9</i>	403	422	402	420	419	400	368	381	406	404
<i>10</i>	428	409	428	408	426	425	405	373	386	412
<i>11</i>	467	423	405	423	404	421	420	401	369	382
<i>12</i>	390	472	428	409	428	408	426	425	405	373
<i>9-12</i>	1688	1726	1663	1660	1677	1654	1619	1580	1566	1571
<i>K-12</i>	4987	4994	4928	4900	4894	4878	4889	4894	4910	4958

**Bethlehem Central School District
Projected Enrollments 6-Year Method**

	11-12	12-13	13-14	14-15	15-16	16-17	17-18	18-19	19-20	20-21
K	294	280	291	286	289	297	305	313	322	330
1	359	350	334	347	341	344	354	364	373	384
2	339	369	360	343	357	351	354	364	374	383
3	335	347	377	368	351	365	359	362	372	383
4	372	340	353	383	374	357	371	365	368	378
5	394	378	345	359	389	380	363	377	371	374
1-5	1799	1784	1769	1800	1812	1797	1801	1832	1858	1902
K-5	2093	2064	2060	2086	2101	2094	2106	2145	2180	2232
6	403	403	387	353	368	398	389	372	386	380
7	394	409	409	392	358	373	404	394	377	391
8	411	394	409	409	392	358	373	404	394	377
6-8	1208	1206	1205	1154	1118	1129	1166	1170	1157	1148
9	404	423	405	421	421	403	368	384	416	405
10	423	405	424	406	422	422	404	369	385	417
11	462	414	396	415	397	413	413	395	361	377
12	387	463	415	397	416	398	414	414	396	362
9-12	1676	1705	1640	1639	1656	1636	1599	1562	1558	1561
K-12	4977	4975	4905	4879	4875	4859	4871	4877	4895	4941

**Bethlehem Central School District
Projected Enrollments 8-Year Method**

	<i>11-12</i>	<i>12-13</i>	<i>13-14</i>	<i>14-15</i>	<i>15-16</i>	<i>16-17</i>	<i>17-18</i>	<i>18-19</i>	<i>19-20</i>	<i>20-21</i>
<i>K</i>	292	279	290	285	288	296	304	312	320	328
<i>1</i>	360	349	333	347	341	344	354	363	373	382
<i>2</i>	339	369	358	342	356	350	353	363	372	383
<i>3</i>	335	347	378	367	350	365	358	361	372	381
<i>4</i>	372	340	353	384	373	356	371	364	367	378
<i>5</i>	395	379	346	360	391	380	363	378	371	374
<i>1-5</i>	1801	1784	1768	1800	1811	1795	1799	1829	1855	1898
<i>K-5</i>	2093	2063	2058	2085	2099	2091	2103	2141	2175	2226
<i>6</i>	401	403	386	353	367	398	387	370	385	378
<i>7</i>	397	409	411	394	360	375	406	395	378	393
<i>8</i>	413	399	411	413	396	362	377	408	397	380
<i>6-8</i>	1211	1211	1208	1160	1123	1135	1170	1173	1160	1151
<i>9</i>	405	426	411	424	426	408	373	389	421	409
<i>10</i>	422	405	426	411	424	426	408	373	389	421
<i>11</i>	462	413	396	417	402	415	417	399	365	381
<i>12</i>	388	464	415	398	419	404	417	419	401	367
<i>9-12</i>	1677	1708	1648	1650	1671	1653	1615	1580	1576	1578
<i>K-12</i>	4981	4982	4914	4895	4893	4879	4888	4894	4911	4955

2011-12 Enrollment Registration with 3, 6, 8 year Projections

<u>School</u>	<u>K</u>	<u>1</u>	<u>2</u>	<u>3</u>	<u>4</u>	<u>5</u>	<u>2011-12</u> Projections	<u>2010-11</u> Actual	
Clarksville	31	43	25	24	37	43	203	203	0
Eagle	51	43	57	62	78	79	370	397	-27
Elsmere	32	42	50	46	43	40	253	282	-29
Glenmont	45	55	55	59	58	53	325	357	-32
Hamagrael	36	48	61	61	73	68	347	385	-38
Slingerlands	<u>49</u>	<u>61</u>	<u>70</u>	<u>69</u>	<u>73</u>	<u>98</u>	<u>420</u>	<u>442</u>	-22
Current Totals	244	292	318	321	362	381	1918	2066	-148
3 yr. projection	299	350	340	337	370	393	2089		
6 yr. projection	294	359	339	335	372	394	2093		
8 yr. projection	292	360	339	335	372	395	2093		
MS	<u>6</u> 392	<u>7</u> 389	<u>8</u> 411				1192	1193	-1
3 yr. projection	407	391	412				1210		
6 yr. projection	403	394	411				1208		
8 yr. projection	401	397	413				1211		
HS	<u>9</u> 393	<u>10</u> 420	<u>11</u> 473	<u>12</u> 386			1672	1694	-22
3 yr. projection	403	428	467	390			1688		
6 yr. projection	404	423	462	387			1676		
8 yr. projection	405	422	462	388			1677		
							4782	4953	-171
3 yr. projection							4987		
6 yr. projection							4977		
8 yr. projection							4981		

2011-12 Adjusted Enrollment
Regression Analysis w/ Projection

School	<u>K</u>	<u>1</u>	<u>2</u>	<u>3</u>	<u>4</u>	<u>5</u>	<u>2011-12</u> Projections	<u>2010-11</u> Actual	
Clarksville	31	43	25	24	37	43	203	203	0
Eagle	51	43	57	62	78	79	370	397	-27
Elsmere	32	42	50	46	43	40	253	282	-29
Glenmont	45	55	55	59	58	53	325	357	-32
Hamagrael	36	48	61	61	73	68	347	385	-38
Slingerlands	<u>49</u>	<u>61</u>	<u>70</u>	<u>69</u>	<u>73</u>	<u>98</u>	<u>420</u>	<u>442</u>	-22
Totals	244	292	318	321	362	381	1918	2066	-148
3 year projection	299	350	340	337	370	393	2089		
6 year projection	294	359	339	335	372	394	2093		
8 year projection	292	360	339	335	372	395	2093		
	<u>K</u>	<u>1</u>	<u>2</u>	<u>3</u>	<u>4</u>	<u>5</u>	<u>2010-11</u>		
Regression Analysis	261.4	308.3	324.7	326.0	364.2	384.3	1968.9		
Amended Enrollment	262.0	308.0	325.0	326.0	364.0	384.0	1969.0		

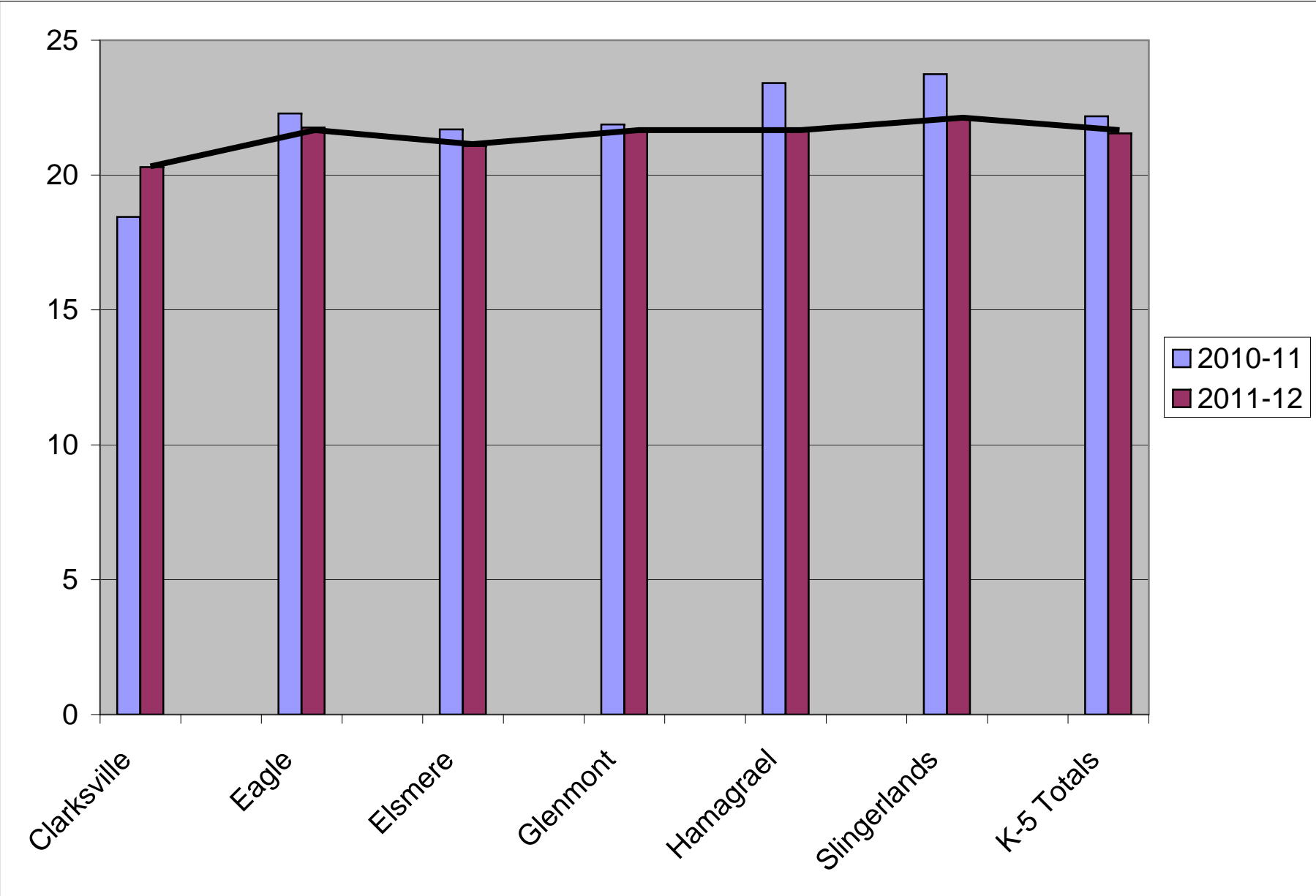
2011-12 Enrollment Registration with 3, 6, 8 Year Projections

<u>School</u>	<u>K</u>	<u>1</u>	<u>2</u>	<u>3</u>	<u>4</u>	<u>5</u>	<u>2011-12</u> <u>Projections</u>
Clarksville	31	43	25	24	37	43	203
Eagle	51	43	57	62	78	79	370
Elsmere	32	42	50	46	43	40	253
Glenmont	45	55	55	59	58	53	325
Hamagrael	36	48	61	61	73	68	347
Slingerlands	<u>49</u>	<u>61</u>	<u>70</u>	<u>69</u>	<u>73</u>	<u>98</u>	<u>420</u>
Totals	244	292	318	321	362	381	1918
3 year projection	299	350	340	337	370	393	2089
6 year projection	294	359	339	335	372	394	2093
8 year projection	292	360	339	335	372	395	2093
Adj. Projection	261	308	325	326	364	384	1969
MS	<u>6</u> 392	<u>7</u> 389	<u>8</u> 411				1192
3 year projection	407	391	412				1210
6 year projection	403	394	411				1208
8 year projection	401	397	413				1211
Adj. Projection	397	389	411				1197
HS	<u>9</u> 393	<u>10</u> 420	<u>11</u> 473	<u>12</u> 386			1672
3 year projection	403	428	467	390			1688
6 year projection	404	423	462	387			1676
8 year projection	405	422	462	388			1677
Adj. Projection	396	423	472	387			1678
K-12 Population							4782
3 year projection							4987
6 year projection							4977
8 year projection							4981
Adj. Projection							4844

Registration with Adjusted Projections

School	<u>K</u>	<u>1</u>	<u>2</u>	<u>3</u>	<u>4</u>	<u>5</u>	<u>2011-12</u>	<u>2011-12</u>	<u>2010-11</u>	S:T Ratio
							Sections	Projections	Sections	
Clarksville	31	43	25	24	37	43		203		20.30
Clk Sections	1.55	1.87	1.04	0.96	1.42	1.59	10		11	
Eagle	51	43	57	62	78	79		370		21.76
Eagle Sections	2.55	1.87	2.38	2.48	3.00	2.93	17		18	
Elsmere	32	42	50	46	43	40		253		21.08
Elsmere Sections	1.60	1.83	2.08	1.84	1.65	1.48	12		13	
Glenmont	45	55	55	59	58	53		325		21.67
Glen Sections	2.25	2.39	2.29	2.36	2.23	1.96	15		17	
Hamagrael	36	48	61	61	73	68		347		21.69
Ham Sections	1.80	2.09	2.54	2.44	2.81	2.52	16		17	
Slingerlands	49	61	70	69	73	98		420		22.11
Sling Sections	<u>2.45</u>	<u>2.65</u>	<u>2.92</u>	<u>2.76</u>	<u>2.81</u>	<u>3.63</u>	19		<u>19</u>	0.00
Actual Totals	244	292	318	321	362	381	89	1918	95	21.55
Projected Totals	261	308	325	326	364	384		1968.9		22.12247
Class Size Guide		23	24	25	26	27				

Comparison of Student:Teacher Ratio



K-12 Private/Parochial School
2010-11

	K	1	2	3	4	5	6	7	8	9	10	11	12	Total
Academy of Holy Names	1	0	2	2	4	6	2	6	3	7	9	15	11	68
Achievements Academy Charter	0	0	0	0	0	1	0	0	0	1	0	0	0	2
Albany Jewish Comm Ctr	1	0	0	0	0	0	0	0	0	0	0	0	0	1
An Nur School	0	0	0	0	0	1	0	0	0	0	0	0	0	1
Bethlehem Childrens School	2	3	0	4	1	3	0	0	1	0	0	0	0	14
Bishop Maginn	0	0	0	0	0	0	0	0	0	1	0	4	0	5
Blossoms Montessori	3	0	0	0	0	0	0	0	0	0	0	0	0	3
Albany Academy for Boys	2	0	2	0	1	0	0	1	4	7	1	2	5	25
Catholic Central HS	0	0	0	0	0	0	0	0	0	1	2	0	0	3
Christian Brothers Academy	0	0	0	0	0	0	0	2	1	3	2	2	3	13
Doane Stuart	0	0	2	1	4	1	3	5	7	1	3	2	2	31
Emma Willard	0	0	0	0	0	0	0	0	0	3	3	7	2	15
Albany Academy for Girls	0	0	2	2	3	2	3	4	0	3	6	4	3	32
Harriet Tubman Free School	0	0	0	0	0	0	0	0	0	0	0	1	0	1
Hebrew Academy	1	1	1	1	3	1	0	1	1	0	0	0	0	10
Helderberg Chrisian	1	0	0	0	0	0	0	0	0	0	0	0	0	1
Kipp Charter	0	0	0	0	0	1	1	1	0	0	0	0	0	3
LaSalle	0	0	0	0	0	0	1	2	1	10	5	3	10	32
Loudonville Christian	1	1	1	2	1	3	1	1	4	2	2	2	3	24
Maimonides	0	0	0	0	0	0	0	1	0	1	1	2	0	5
Mater Christine	1	0	1	0	0	1	2	1	4	0	0	0	0	10
Montessori Ctr	1	0	0	0	0	0	0	0	0	0	0	0	0	1
Our Saviour Lutheran	1	0	2	2	0	2	2	3	1	0	0	0	0	13
Robert C. Parker	0	2	0	0	1	4	0	0	0	0	0	0	0	7
St. Gregory	0	0	1	0	1	1	0	0	1	0	0	0	0	4
St. Mary's	0	0	0	1	0	0	0	0	0	0	0	0	0	1
St. Pius X	1	1	1	0	1	1	0	1	2	0	0	0	0	8
St. Thomas	10	9	8	12	12	9	13	13	11	0	0	0	0	97
Tech Valley HS	0	0	0	0	0	0	0	0	0	0	0	1	1	2
Woodland Hills	1	0	3	1	2	2	2	1	2	0	0	0	0	14
Grand Total	27	17	26	28	34	39	30	43	43	40	34	45	40	446

Kindergarten Private/Parochial
2010-11

	# Students	Clarksville	Eagle	Elsmere	Glenmont	Hamagrael	Slingerlands
Academy of Holy Names	1	1					
Albany Academy for Boys	2				1		1
Albany Jewish Community Center	1				1		
Bethlehem Pre-School	2					1	1
Blossoms Mont	3		1			1	1
Hebrew Academy	1	1					
Helderberg Christian School	1	1					
Loudonville Christian School	1				1		
Montessori Ctr	1			1			
Our Savior Lutheran	1						1
St. Catherine of Siena/Mater Christian	1	1					
St. Pius	1	1					
St. Thomas School	10	1		1	2	3	3
Woodland Hills Mont	1		1				
Grand Total	27	6	2	2	5	5	7

Comparison of Public and Private Enrollment

Year	Number of Public School Children			Number of Private School Children			
	Total*	K-6	7-12	Total	K-6	7-12	% Private
1990-91	4014	2244	1770	472	307	165	10.5%
1991-92	4157	2386	1772	432	266	166	9.4%
1992-93	4222	2436	1786	494	326	168	10.5%
1993-94	4254	2445	1809	442	302	140	9.4%
1994-95	4421	2562	1859	459	297	162	9.4%
1995-96	4513	2513	2000	523	310	213	10.4%
1996-97	4619	2513	2106	507	318	189	9.9%
1997-98	4677	2469	2208	506	320	186	9.8%
1998-99	4754	2489	2265	497	295	202	9.5%
1999-00	4784	2494	2290	497	310	187	9.4%
2000-01	4866	2520	2346	528	306	222	9.8%
2001-02	4941	2527	2414	531	305	226	9.7%
2002-03	5037	2621	2416	531	305	226	9.5%
2003-04	5061	2628	2433	541	319	222	9.7%
2004-05	5134	2611	2523	515	319	196	9.1%
2005-06	5180	2622	2558	544	341	203	9.5%
2006-07	5212	2673	2540	512	307	205	8.9%
2007-08	5106	2594	2512	542	324	218	9.6%
2008-09	5093	2572	2521	492	236	256	8.8%
2009-10	5068	2533	2535	458	201	245	8.2%
2010-11	4953	2455	2498	446	201	205	8.20%

Bethlehem Central School District Census Data
Incoming Kindergarten Students

<u>School</u>	<u>2011-12</u>	<u>2012-13</u>	<u>2013-14</u>	<u>2014-15</u>	<u>Total</u>	<u>Enrollment Percentage</u>
Clarksville	31	17	14	5	67	11.3%
Eagle	51	23	21	16	111	18.7%
Elsmere	32	32	14	13	91	15.3%
Glenmont	45	31	20	12	108	18.2%
Hamagrael	36	31	15	8	90	15.2%
Slingerlands	49	32	31	14	126	21.2%
Totals	244	166	115	68	593	100.0%

Town of Bethlehem Single-Family Houses Built

1974	44	1992	171
1975	87	1993	152
1976	79	1994	128
1977	171	1995	76
1978	131	1996	90
1979	85	1997	109
1980	81	1998	166
1981	50	1999	189
1982	58	2000	172
1983	111	2001	160
1984	137	2002	176
1985	171	2003	154
1986	154	2004	99
1987	81	2005	62
1988	107	2006	68
1989	110	2007	63
1990	83	2008	14
1991	92	2009	13

Does not include condominiums, apartments or duplexes

Buildable Single Family Lots
likely to Develop Within 5 Years

<u>Zone of Attendance</u>	<u>Proposed Lots</u>	<u>Approved Lots</u>	<u>Permits Issued</u>	<u>Remaining Lots</u>	<u>Permits Issued 2009</u>
Clarksville					
Mystic Woods	9	9	0	9	0
Phlippin Kill Manor	60	45	0	45	0
Town of New Scotland	<u>20</u>	<u>0</u>	<u>0</u>	<u>20</u>	<u>0</u>
Total	89	54	0	74	0
Eagle					
Cottonwood Estates	7	7	0	7	0
Fieldstone Creek	16	16	-15	1	1
Kontogiannis	4	4	0	4	0
Briar Hill	<u>20</u>	<u>20</u>	<u>-19</u>	<u>1</u>	<u>0</u>
Total	47	47	-34	13	1
Elsmere					
Hudson Glen	3	3	0	3	0
Normansgate	1	1	0	1	0
Pines @ Normanside	<u>15</u>	<u>15</u>	<u>-5</u>	<u>10</u>	<u>0</u>
Total	19	19	-5	14	0
Glenmont					
Bethlehem Real Estates					
Dreamfield Estates /Legends	70	70	-5	65	0
Glenmont Woods	9	9	-2	7	0
Milltowne Plaza	93	93	-74	19	-8
Meadowview	33	33	-29	-4	0
Meadowview II	<u>7</u>	<u>7</u>	<u>0</u>	<u>7</u>	<u>0</u>
Total	212	212	-110	94	-8

Buildable Single Family Lots
likely to Develop Within 5 Years

<u>Zone of Attendance</u>	<u>Proposed Lots</u>	<u>Approved Lots</u>	<u>Permits Issued</u>	<u>Remaining Lots</u>	<u>Permits Issued 2009</u>
Hamagrael					
Candlewood	34	34	-31	3	0
Gra-Bill	30	30	-10	20	0
Hampshire Place	6	6	-4	2	0
Westchester Woods	26	26	-22	4	-1
Westchester Park	24	24	-23	1	0
Woodstream	<u>14</u>	<u>14</u>	<u>-13</u>	<u>1</u>	<u>0</u>
Total	134	134	-103	31	-1
Slingerlands					
Deerfield	14	14	-13	1	0
Devonshire Hills	8	8	-2	6	-1
Klein	4	4	0	4	0
McCormacks Hollow	<u>10</u>	<u>7</u>	<u>-3</u>	<u>4</u>	<u>0</u>
	36	33	-18	15	-1

Summary of 2004-05 through 2009-10 Enrollment
and Class Size Comparisons

	<u>2005-06</u>	<u>2006-07</u>	<u>2007-08</u>	<u>2008-09</u>	<u>2009-10</u>	<u>2010-11</u>
K Enrollment	294	288	272	276	308	292
Average Class Size, K	21.0	20.6	19.4	18.4	19.3	20.9
1-5 Enrollment	1927	1895	1882	1852	1817	1777
Average Class Size, 1-5	22.4	22.3	22.1	21.8	22.4	21.9
6-8 Enrollment	1213	1250	1246	1252	1214	1193
Average Class Size, 6-8*	22.5	21.9	20.8	20.9	20.1	19.9
9-12 Enrollment	1721	1748	1667	1658	1729	1694
Average Class Size9-12**	20.5	21.4	21.0	18.0	21.2	20.7
K-12 Enrollment ***	5155	5181	5067	5038	5068	4953

* English, Math, Science, and Social Studies

** All subjects except Music, Lab School

***Does not include students in self-contained special education classes or BOCES/approved private placements

Elementary Enrollment and Staffing
1998-99 through 2011-12

	<u>Year</u>	<u>K-5 Enrollment</u>	<u>No. Teachers</u>	<u>Average Class Size</u>	<u>Teachers Added</u>
<i>Projected</i>	<u>2011-12</u>	<u>1918</u>	<u>89</u>	<u>21.55</u>	<u>-6</u>
	2010-11	2066	95	21.7	-2
	2009-10	2125	97	21.9	3

	<u>Year</u>	<u>1-5 Enrollment</u>	<u>No. Teachers</u>	<u>Average Class Size</u>	<u>Teachers Added</u>
	2008-09	1852	85	21.8	0
	2007-08	1882	85	22.1	0
	2006-07	1895	85	22.3	-1
	2005-06	1927	86	22.4	0
	2004-05	1922	86	22.3	2
	2003-04	1899	84	22.6	1
	2002-03	1902	83	22.9	2
	2001-02	1843	81	22.8	1
	2000-01	1769	80	22.1	0
	1999-00	1805	80	22.6	0
	1998-99	1826	80	22.8	0

Middle School Staffing
Comparison Data

Current Staffing			
<u>Grade</u>	<u>Enrollment</u>	<u>Sections</u>	<u>Average Size</u>
6	389	20	19.7
7	411	20	20.2
8	393	20	22.8
Total	1193	60	20.9

2011-12 Projected Staffing			
<u>Grade</u>	<u>Enrollment</u>	<u>Sections</u>	<u>Average Size</u>
6	407	20	20.4
7	393	20	19.7
8	414	20	20.7
Total	1214	60	20.2

HS Sections Staffing
2010-2011

DEPARTMENT	Mar-09			Nov-09		
	Scheduled Requests	FTE	Ratio	Scheduled	FTE	Ratio
Art	769	6.50	118.31	736	6.50	113.23
Business	137	1.00	137.00	117	1.00	117.00
CTE	310	3.00	103.33	294	3.00	98.00
English	1594	14.80	107.70	1620	14.80	109.46
FACS	108	0.80	135.00	87	0.80	108.75
Math	1588	14.80	107.30	1541	14.80	104.12
Science	1896	16.90	112.19	1796	16.90	106.27
World Languages	1298	9.80	132.45	1133	9.80	115.61
Social Studies	1758	15.60	112.69	1715	15.60	109.94
Phys. Ed.	851	7.20	118.19	851	7.20	118.19
Health	179	1.50	119.33	179	1.50	119.33
Total	10488	91.90	114.12	10069	91.90	109.56

High School Student Courses/Teachers Staffing Data 2000-01 through 2010-11

<u>Year</u>	<u>Adjusted Course Enrollment*</u>	<u>School Enrollment**</u>	<u>Teacher FTE</u>	<u>Average Student/Teacher Ratio</u>	<u>Average Courses/Student</u>
2000-01	8869	1424	82.4	107.6	6.23
2001-02	9163	1451	84	109.3	6.32
2002-03	9245	1482	85.4	108.3	6.24
2003-04	9132	1515	87.8	104	6.03
2004-05	9453	1566	92.3	102.3	6.04
2005-06	9662	1622	94.3	102.3	5.96
2006-07	10134	1648	94.9	107.1	6.15
2007-08	9928	1559	94.7	104.8	6.37
2008-09	9735	1658	94.7	102.8	5.87
2009-10	10182	1735	95.1	107.1	5.87
2010-11	10069	1694	91.9	109.6	5.94

* Semester enrollment for the year (avoids double-counting students enrollment in both 1st & 2nd semester)

** Excludes Lab School students

Elementary School Capacity
2010-11 School Year

<u>School</u>	<u>k-5 Classrooms</u>	<u>Kindergarten</u>	<u>BC Special Education</u>	<u>Other Rooms</u>	<u>Total</u>	<u>% District Capacity</u>	<u>Classroom Availability</u>
Clarksville	12	2	0	2	14	11.9%	1
Eagle	19	3	2	2	23	19.5%	1
Elsmere	13	2	2	2	17	14.4%	2
Glenmont	13	3	2	2	17	14.4%	2
Hamagrael	18	3	2	2	22	18.6%	2
Slingerlands	<u>21</u>	<u>3</u>	<u>2</u>	<u>2</u>	25	<u>21.2%</u>	4
Total	96	16	10	12	118	100.0%	12

Elementary Capacity vs. Growth

<u>School</u>	<u>% 2011-12 District Room Capacity¹</u>	<u>% 2010-11 K- 5 Enrollment²</u>	<u>% Oct. 10 Preschool Census³</u>	<u>% Potential Residential Development⁴</u>
Clarksville	11.9%	9.8%	12.7%	83.1%
Eagle	19.5%	19.2%	20.9%	27.7%
Elsmere	14.4%	13.6%	13.1%	73.7%
Glenmont	14.4%	17.3%	18.4%	44.3%
Hamagrael	18.6%	18.6%	14.8%	23.1%
Slingerlands	21.2%	21.4%	20.1%	45.5%

1. The percentage of District Room Capacity is determined from the Elementary School Capacity spread sheet on page 34.
2. The percentage of the 2010-11 K-5 Enrollment is determined from the Student Enrollment Report 2010-2011 spreadsheet on page 1. The percentage is derived by dividing the total K-5 building population by the total population of 2066 registered at the school on October 2010.
3. The percentage for the October 2010 Preschool Census is taken from the Incoming Kindergarten Students spreadsheet on page 25. The percentage is derived from the pre-school numbers by each building divided by the total enrollment as of October 2010, which is 244.
4. The percentage of Residential Development over the next five years is derived from the information on the Building Single Family Lots spreadsheet on pages 27-28. In each elementary school zone of attendance there are specific developments listed with the available lots for building. The Town of Bethlehem and New Scotland report to me the number of houses being built on these developments. The percentage is taken from dividing the houses to be built with known applications by the available lots in the zone of attendance.