



Who to contact and when > A guide for parents & the community

This document was developed to help ensure that questions and concerns are addressed in the most efficient and effective manner possible. It outlines who you should contact for information in a particular area.

Questions/Concerns	Grades	1st level	2nd level	3rd level	4th level	5th level
Academics						
Curriculum Instructional materials Classroom concerns	All	Teacher	Academic Subject Supervisor	Principal	Assistant Superintendent	Superintendent
Discipline	All	Teacher	Principal/ Assistant Principal (6-12)	Assistant Superintendent	Superintendent	
Scheduling	K-5	Teacher	Principal	Assistant Superintendent	Superintendent	
	6-8	Teacher	Counselor	Principal	Assistant Superintendent	Superintendent
	9-12	Teacher	Counselor	Principal	Assistant Superintendent	Superintendent
Athletics	All	Coach	Athletics Director	Principal	Assistant Superintendent	Superintendent
Attendance	All	Main Office or School Nurse	Principal	Superintendent		
School Policy	All	Principal	Superintendent	Board of Education		
Building Use	K-12 Classrooms	Main Office	Principal	Chief Business Officer	Superintendent	
	Athletic areas	Main Office	Athletics Director	Chief Business Officer	Superintendent	
Food Service	All	Food Services Director	Principal	Chief Business Officer	Superintendent	
Health/Medical Issues	All	School Nurse	Principal/Athletics Director	Director Special Ed & Student Services	Superintendent	
Special Education	All	Special Education Teacher/CSE Chair	Principal	Director of Special Ed & Student Services	Assistant Superintendent	Superintendent
Transportation	All	Transportation Dispatcher	Transportation Director	Principal	Chief Business Officer	Superintendent
Aspen/Parent Portal	All	School	Technology Office			
Registration/Moving	All	District Registrar	School			

Important Note

It is important to contact the staff member most directly involved first. If the question remains unresolved, you will be asked to proceed to the next level. When someone contacts a Board of Education member or a district administrator before working through the process, they will be referred to the staff member most immediately involved with that particular issue. The Board of Education will become involved, if necessary, in the final stage of the process.

It is the primary responsibility of the Board of Education to set policies for the school district. While individual Board members listen to concerns, they can only act as an entire body when conducting official Board of Education meetings. The superintendent and administrative staff are legally empowered to administer the school district and operationalize the policies and decisions of the Board of Education.

Contact information on page 2 >

Contact Information

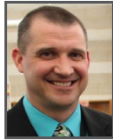


District Administration

Superintendent of Schools
Jody Monroe | 518-439-7098
jmonroe@bethlehemschools.org



Asst. Superintendent for Educational Programs
David Hurst | 518-439-3102
dhurst@bethlehemschools.org



Chief Business and Financial Officer
Judith Kehoe | 518-439-7481
jkehoe@bethlehemschools.org



Director of Special Education & Student Services
Kathleen Johnston | 518-439-8886
kjohnston@bethlehemschools.org

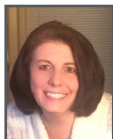


Chief Technology & Information Officer
Raymond Nardelli | 518-439-4921
rnardelli@bethlehemschools.org



School Principals

Eagle Elementary
518-694-8825
Principal Dianna Reagan
dreagan@bethlehemschools.org



Elsmere Elementary
518-439-4996
Principal Kate Kloss
kkloss@bethlehemschools.org



Glenmont Elementary
518-463-1154
Principal Laura Heffernan
lheffernan@bethlehemschools.org



School Principals (CONTINUED)

Hamagrael Elementary
518-439-4905
Principal David Kszanznak
dksanznak@bethlehemschools.org



Slingerlands Elementary
518-439-7681
Principal Heidi Bonacquist
hbonacquist@bethlehemschools.org



Bethlehem Central Middle School
518-439-7460
Principal Michael Klugman
mklugman@bethlehemschools.org



Asst. Principal Mark Warford
518-439-7460
mwarford@bethlehemschools.org



Asst. Principal Jacqueline Munroe
518-439-7460
jmunroe@bethlehemschools.org



Bethlehem Central High School
518-439-4921
Principal David Doemel, Jr.
ddoemel@bethlehemschools.org



Asst. Principal Nicole Conway
518-439-4921
nconway@bethlehemschools.org



Asst. Principal Heather Culnan
518-439-4921
hculnan@bethlehemschools.org



Asst. Principal James Smith
518-439-4921
jsmith1@bethlehemschools.org



District Services

Athletics Director
Leonard Kies | 518-439-4921 x22113
lkies@bethlehemschools.org



District Registrar
Melissa Haas | 518-439-2442
mhaas@bethlehemschools.org



Food Services Director
Allissa Eiser | 518-439-8885
aeiser@bethlehemschools.org



Director of Facilities & Operations
Gregg Nolte | 518-439-2123
gnolte@bethlehemschools.org



Human Resources Director
Amy Baluch | 518-439-7481
abaluch@bethlehemschools.org



School Nurse/Health Services Coordinator
JoAnn Menrath | 518-439-7460
jmenrath@bethlehemschools.org



K-12 School Counselor Supervisor
Kristen Connor | 518-439-4921
kconnor@bethlehemschools.org



Administrator for Response to Intervention (RTI)
Laurel Jones | 518-439-7517
ljones@bethlehemschools.org



Transportation Director
Cindy Jurewicz | 518-439-3830
cjurewicz@bethlehemschools.org



Academic Supervisors

Academic supervisors oversee instruction, by subject area, in grades K-12.

Art
Melanie Painter
518-439-4921 x22048
mpainter@bethlehemschools.org



Career & Business Education, Social Studies
Nick Petraccione
518-439-4921 x22048
npetraccione@bethlehemschools.org



ELA (English Language Arts)
Andrew Baker
518-439-4921 x22048
abaker1@bethlehemschools.org



FACS (Family & Consumer Sciences), Health & Physical Education
Fred Powers
518-439-4921 x22048
fpowers@bethlehemschools.org



Mathematics
William Clairmont
518-439-4921 x22048
wclairmont@bethlehemschools.org



Music
David Norman
518-439-4921 x22048
dnorman@bethlehemschools.org



Science, Technology Supervisor
Jennifer Gonyea
518-439-4921 x22048
jgonyea@bethlehemschools.org



World Languages & ENL (English as a New Language)
Luis Avilés
518-439-4921 x22048
laviles@bethlehemschools.org

