

Monday

Tuesday

Wednesday

Thursday

Friday

**NO SCHOOL**

**Mini Maple Waffles**

**Tropical Escape Smoothie**

**WG Cinnamon Breakfast Round**

**WG DONUT**

**Omelet And Biscuit**

**Cinnamon Roll**

**Caramel Banana Parfait**

**WG Frudel**

**WG Donut Holes**

**NO SCHOOL**

**WG Frudel**

**Hot Cocoa Yogurt Parfait**

**WG Cinnamon Breakfast Round**

**WG DONUT**

**Pig In a Blanket**

**REGENTS WEEK KITCHEN CLOSED**

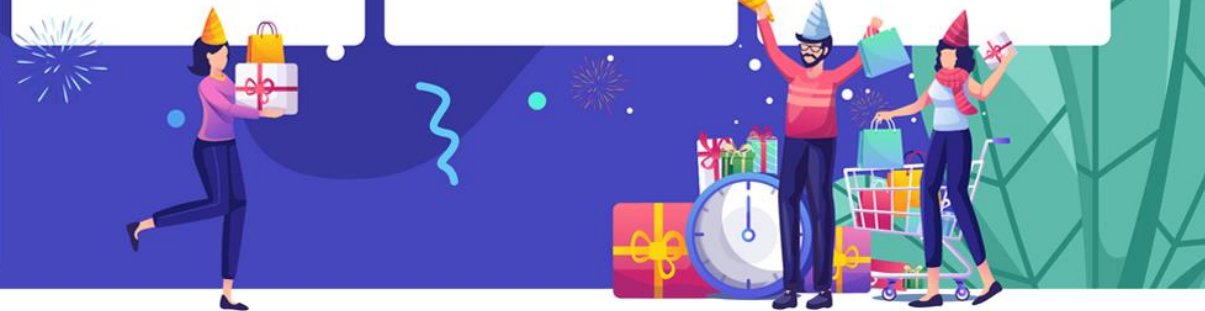
**REGENTS WEEK KITCHEN CLOSED**

**REGENTS WEEK KITCHEN CLOSED**

**REGENTS WEEK KITCHEN CLOSED**

**Maple Cinnamon Pancakes**

**Cinnamon Roll**



Milk is available with all meals. A variety of fruit and juice is served daily.

**Due to Food Supply Issues, menu may change at any time.** If you have questions about school meals, please call the food service office at 439-8885, ext 2118