



"Excellence Through Innovation!"

BETHLEHEM LAB SCHOOL



Lab School: True or False

True or False: Lab School is only for really smart or really weak students.

False: Lab School is made up of a mix of all types of students.





Lab School: True or False



True or False: Lab School classes are easier than the traditional school.

False: Lab School classes are taught at the Regents level with enrichment.



Lab School: True or False

True or False: Lab school students get to see friends from outside of Lab School

True: only 4 ½ out of 8 periods in the day are Lab School classes

Lab School: True or False

True or False: Lab School students are lazy and do little or no work.

**False: Normal Classwork + Research Class +
Community Service Hours (15 hrs/year) +
Senior Internship (175 hours)**

Why was Lab School created?

- Founded in 1992 by forward-thinking teachers as a response to local businesses to develop traditional curriculum + soft skills
- Based on different teaching styles and more interactive class discussion.
- Created to try new ideas to pass onto the traditional school.



M.Z.

Why Join Lab School?

- Educational field trips.
- < 100 students – grades 9 to 12.
- Small school feeling in a large school.
- Students less apt to get lost or left out.
- Small coherent group of teachers that know all students.



Academics

- Lab School Students are **REQUIRED** to maintain an overall **80 average** to remain in Lab School.
- Established to promote mastery learning and encourage remediation.



A.H.

Academics

Science: 4 years required

- Living Environment
- Biology/Independent Study
- Chemistry
- Physical Science

Mathematics: 4 years required

- Common Core
- Geometry
- Algebra II
- Pre-Calculus

Algebra 1 Regents
Required



Lab School students graduate with at least a Regents diploma

Academics

English

- 4 years
- Regents Exam grade 11

Social Studies

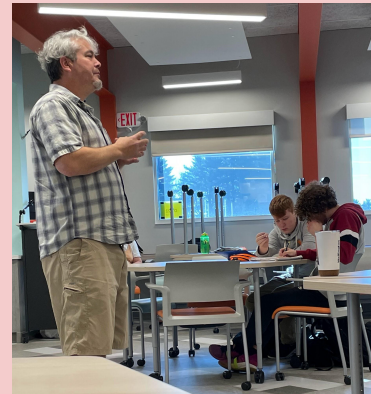
- Global 9/10- Regents
- American History-Regents
- P.I.G./Economics

College Prep and Readiness



Research Class

- Regularly scheduled class
- Grades 9-12
- Curriculum based & credit bearing
- In grades 9 through 11, students gain skills working up to senior year paper and paper expectations



Senior Internships

S.S

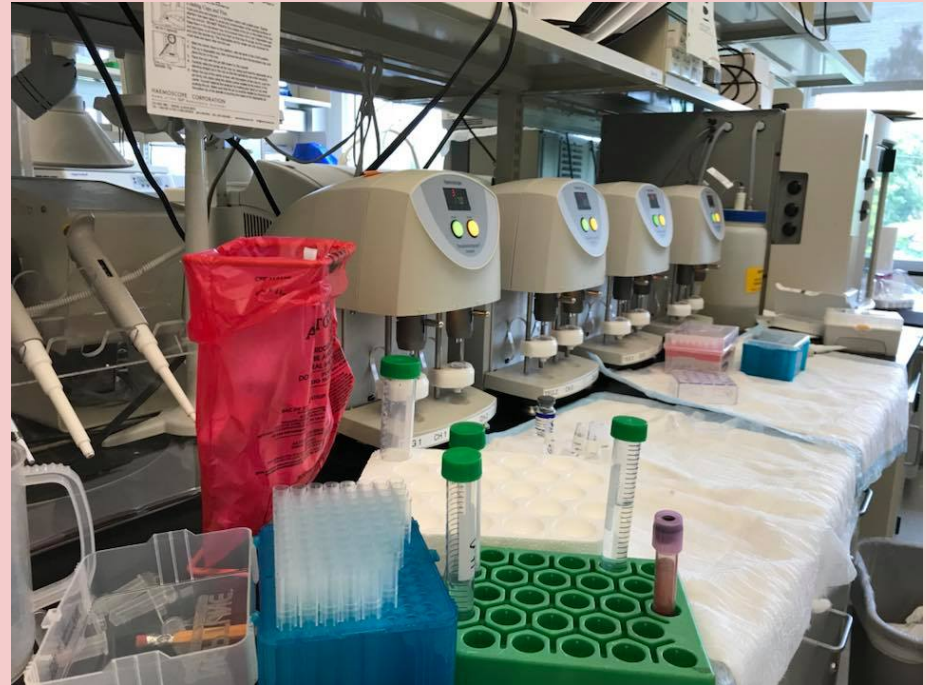
State Legislature, Hospitals, Newspapers, Radio Stations, Nonprofits, and more!

Senior year

- Can begin during summer prior to senior year with approval
- 175 Documented Hours
- Students earn 1 credit

Research Class

- Paper and Presentation including students' own authentic research



Lab School in the Traditional School

World Language

- 3 years of **World Language** or **5 Art/Music/Tech** sequence

Physical Education

- 4 years required
- Classes **in Traditional School** with non-Lab School students
- Regular Physical Education Curriculum

Electives

- During non Lab School periods **in the traditional program**
- 3.5 credits required before graduating

Music Department

- Students may continue music programs
- Classes taken with non-Lab School students
- Music programs can replace the needed electives

Higher Level Education Opportunities

E.H

Honors Work

- STEM Honors
- Humanities Honors
- Research Honors

College Courses

- Students in Lab School can still take AP courses that fit within their schedule.
- AP Elective Courses have been successfully completed by Lab School students for credit such as:
Advanced Math, Foreign Language, Psychology, and others.

Community Meetings and Press Club

- Community Meeting
 - Team building between grades
 - Community service
 - announcements
 - Event/field trip planning
- Press Club
 - Guest Speakers and Presentations
 - Ex: Surgeons, Artists, Engineers, Astronomers, etc from our local community



Remediation

Remediation Goals

- Promote mastery learning
- Allow students with difficulty extra time to understand curriculum
- Allows students to redo an assignment that they feel they did poorly on

College Admission

COLLEGE ACCEPTANCES:

- Over 125 colleges all over the country have accepted Lab School students, AND...

Compared to traditional school students, Lab School students are eligible and have been offered a significant and comparable number of scholarships!

- Lab School adds uniqueness to your college application
- 5% of BCHS graduates come from Lab School



Field Trips

Philadelphia and
Valley Forge



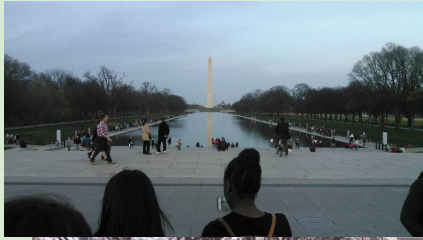
S.M.

Boston and Plymouth Plantation



Williamsburg and Monticello

Washington DC



Retreats

Educational

1. Guest Speakers
2. Seminars
3. Workshops
4. Building Community

Recreational

1. Special Guests
2. Contests & Competitions
3. Wrapping up the school year and saying goodbye to the seniors





Field Trips and Retreats

Estimated costs per school year:

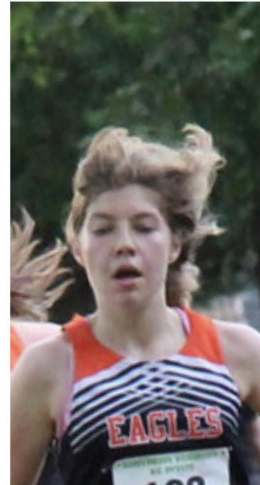
- Camp Chingachgook and Silver Bay Retreats = \$250 each
- Theatre trips = \$25
 - Includes play ticket and lunch in Albany
- Four-day three-night trip to a major city = \$850-1100
 - Boston, Philadelphia, Washington, D.C., Colonial Williamsburg

Total = \$1500

There are many fund raising opportunities throughout the year.

J.W.

Who is in Lab School?



ATHLETES:

Swimming
Hockey
Football
Cheerleading
Track
Tennis
Curling
Soccer
Lacrosse

Who is in Lab School?



Musicians:

Band

Orchestra

Choir

Empire State

Youth Orchestra

Who is in Lab School?



CLUB LEADERS:

Class Officers

Senior Council

Peer Helpers

Key Club

G.S.A.

S.A.D.D.

Peace and Survival

Theatre Without a Net

Why I Joined Lab School...

A Variety Of Reasons

- Projects/research
- Community environment
- Relationships with teachers and students
- Combination of traditional and non-traditional experiences
- Educational decision making
- College prep and internships
- My parents made me (but now I love it!)

What Kind of Student is Successful in Lab School?

You Must Be:

- willing to devote extra time outside of school
- organized
- reliable
- a hard worker
- a risk taker
- a team player
- willing to learn
- willing to be a proud member of the Lab School

B.K.

Lab School Wants You!







Lab School BBQ Fundraiser

Saturday, March 4th 2023 BCHS Cafeteria, 3pm

